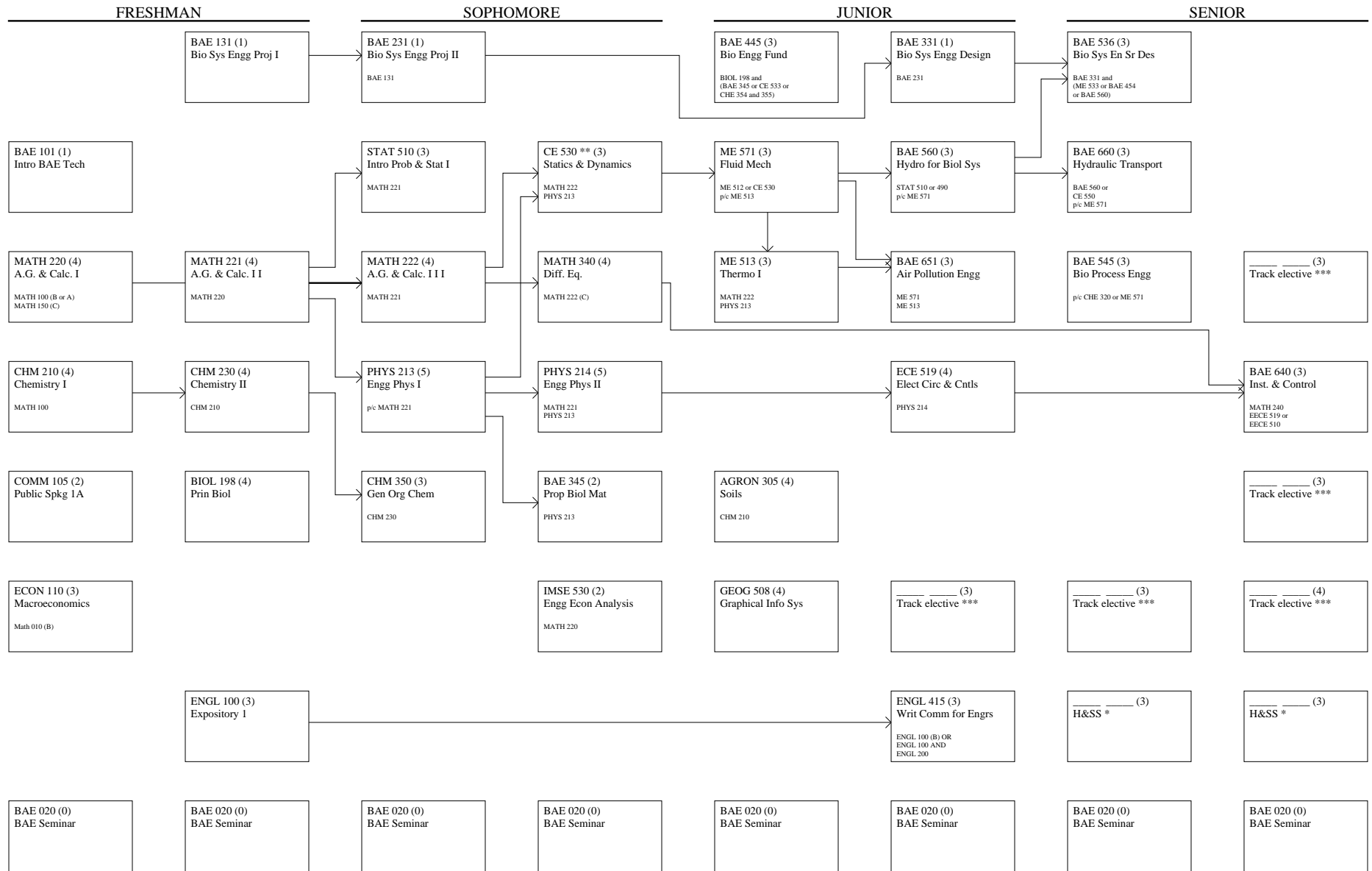


BIOLOGICAL SYSTEMS ENGG. - Environmental Option (127 hours)

Effective Fall 2014

DOE:
Class:
Flowchart: 14
Hours:

Advisor:
Printed:



** Humanities and Social Science electives must be chosen from the take a technical elective (see advisor) official list and also satisfy K-State 8 Gen Ed overlay requirements
** OR CE 333
*** Track electives must be from the official BAE list; see advisor

Arrows to front of course box indicates prerequisite course
Arrows to side of course box indicates p/c, where:
p/c = prereq. or concurrent requirement