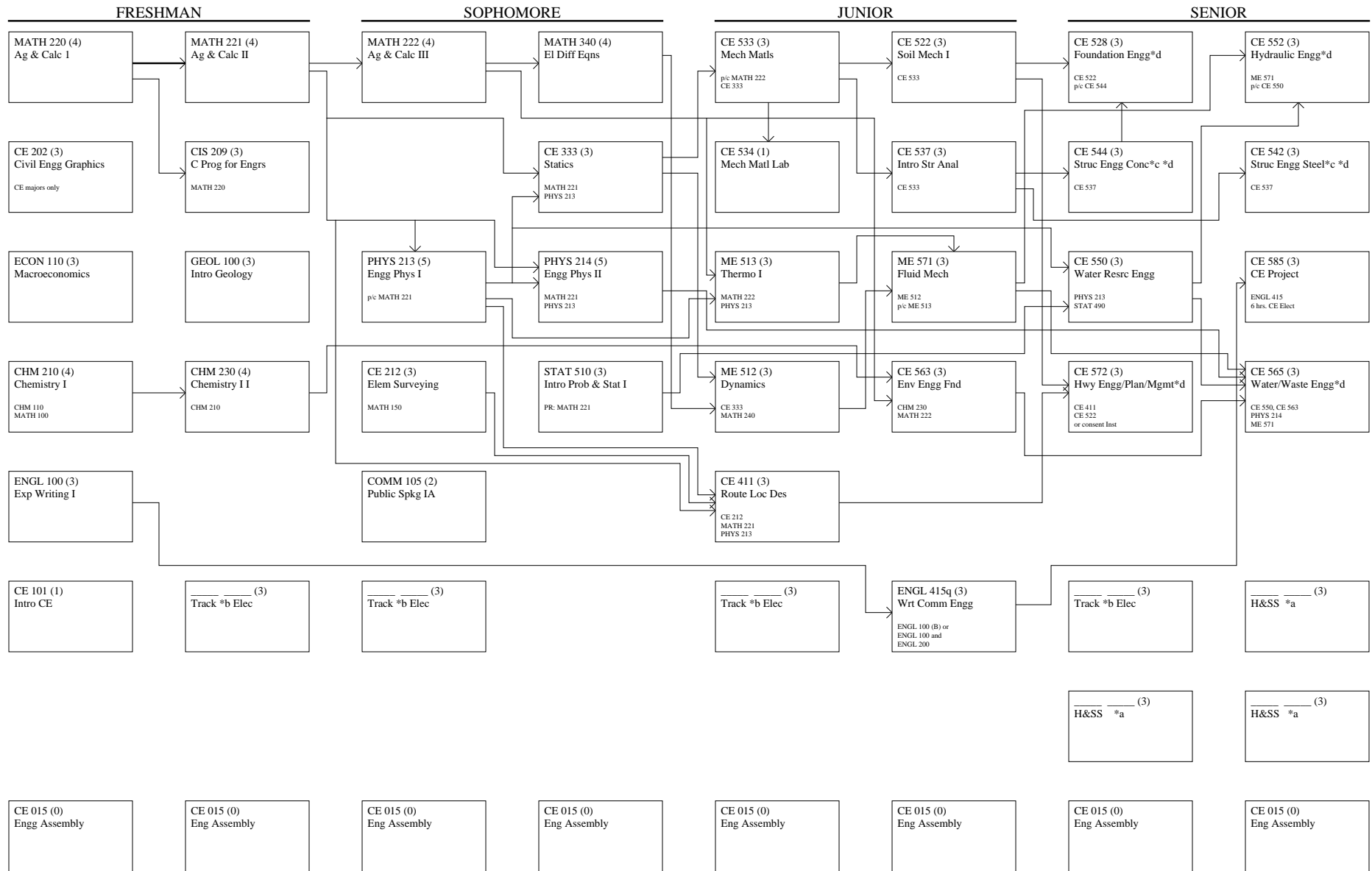


CIVIL ENGINEERING - General Track (128 hrs.)

Effective Fall 2017

DOE:
Class:
Flowchart: 37
Hours:

Advisor:
Printed:



*a Humanities & Social Sciences Electives are to be selected from the approved Engineering list. Students should select these courses as needed to also satisfy the K-State 8 General Education program.
 *b 15 Hrs Track electives selected in consultation with your advisor with at least one from CE 641, CHE 352 or EECE 519
 *c Must complete either CE 544 or CE 542
 *d CE Electives include four of the five following: CE528, CE542 or CE544, CE552, CE 565, and CE572. Check prerequisites carefully
 NOTE: CHOOSE FOUR CE ELECTIVES AND DETERMINE WHEN TO TAKE OTHER ELECTIVES TO LIMIT SEMESTER LOAD AT 15 TO 18 HOURS.

Arrows to left side of course box indicates prerequisite course
 Arrows to top and bottom of course box indicates p/c
 p/c = prereq. or concurrent requirement

Currently Enrolled

Passed

Retaken

Fall 2018 flowchart